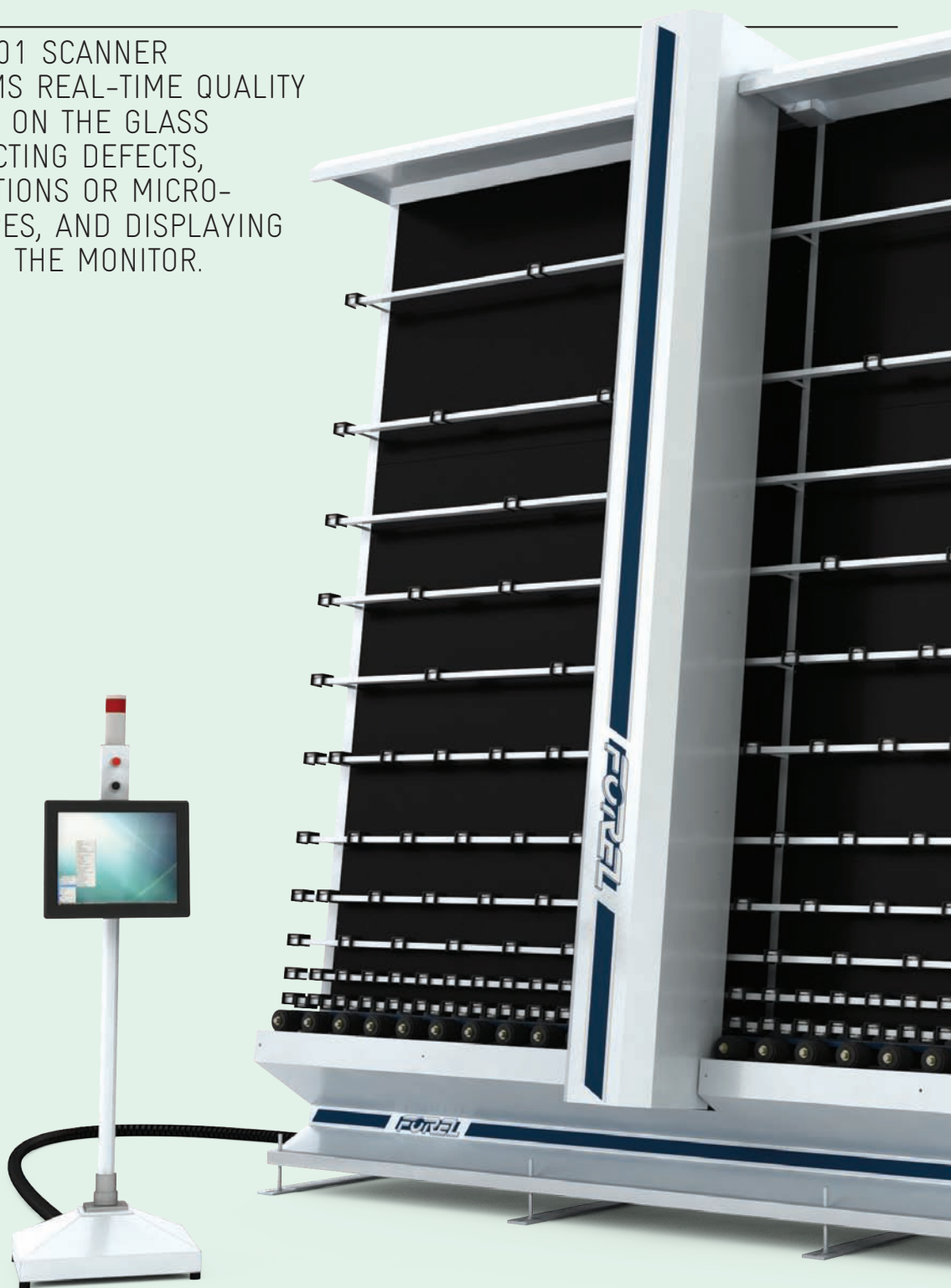


ART. SQD01

QUALITY CONTROL SCANNER

THE SQD01 SCANNER PERFORMS REAL-TIME QUALITY CONTROL ON THE GLASS BY DETECTING DEFECTS, INDENTATIONS OR MICRO-FRACTURES, AND DISPLAYING THEM ON THE MONITOR.



VERTICAL CUTTING LINE



LAMINATING LINE

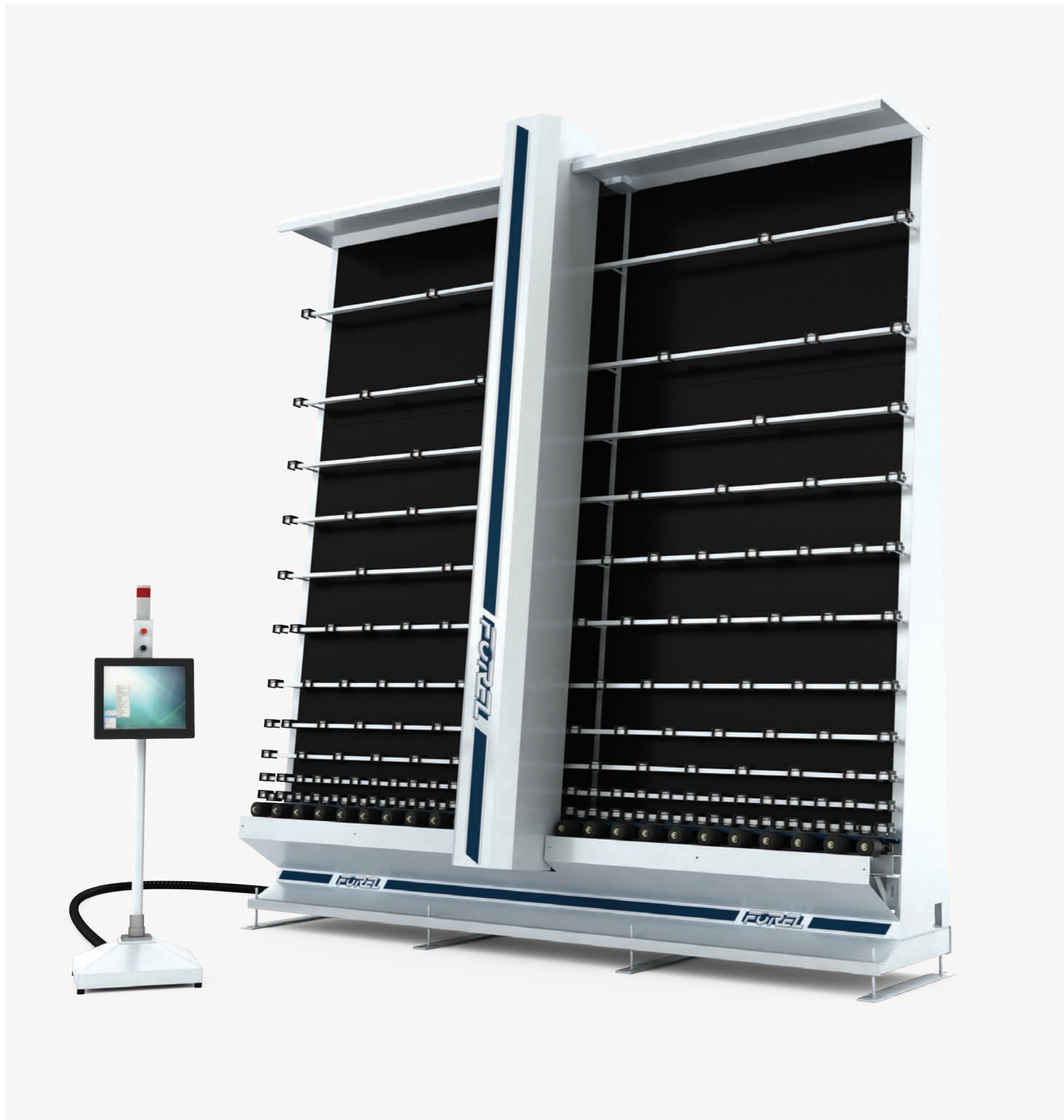


EDGE PROCESSING



INSULATING GLASS

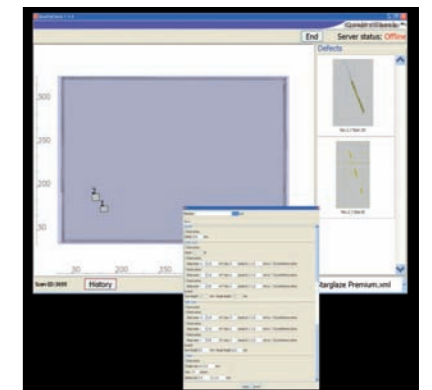
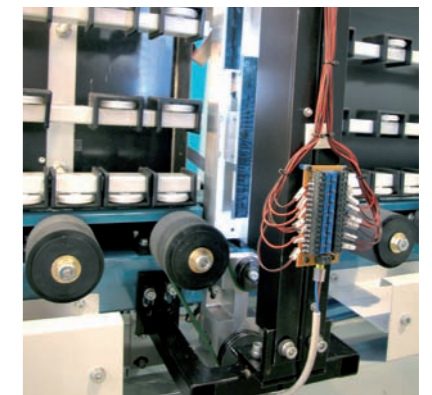




A combination of innovative software and technology allows this scanner to detect accurate information as the glass is moving along the insulated glass production line conveyor or on a glass processing line conveyor.

The scanner can be installed vertically and horizontally; the data collected is displayed within the normal working cycle times.

The scanner has dedicated software that produces images with a resolution of up to 400 dpi (0.0635 mm). The defects detected by the scanner can be categorised by the user according to the type and size of defect. The scanned results are displayed on-line in real time and can alert the operator with pre-selected colours and standards, to automatically display an "accept" or "reject" status. These scans can also be stored for future reference and/or analysis using special data compression methods.



Technical information

| | SQD161 | SQD201 | SQD251 | SQD281 | SQD321 |
|----|---|---|---|---|---|
| A | 1600 | 2000 | 2500 | 2800 | 3250 |
| B | 640 | 640 | 640 | 640 | 640 |
| H | 2500 | 2900 | 3400 | 3700 | 4150 |
| L | Depending on the line to fit in the scanner | Depending on the line to fit in the scanner | Depending on the line to fit in the scanner | Depending on the line to fit in the scanner | Depending on the line to fit in the scanner |
| P | 1050 | 1050 | 1050 | 1050 | 1050 |
| E1 | 3P+N+E -50Hz 400/230V Installed: kW 1 Absorbed maximum: -80% | 3P+N+E -50Hz 400/230V Installed: kW 1 Absorbed maximum: -80% | 3P+N+E -50Hz 400/230V Installed: kW 1 Absorbed maximum: -80% | 3P+N+E -50Hz 400/230V Installed: kW 1 Absorbed maximum: -80% | 3P+N+E -50Hz 400/230V Installed: kW 1 Absorbed maximum: -80% |
| P1 | 10 A | 10 A | 10 A | 10 A | 10 A |

Forel reserves the right to change the data in this general description sheet. The machine shown is a mere guideline, it may include optional accessories and vary according to the maximum work height.

